

# HSAJET® Printheads

HP TIJ 2.5

The HSAJET® F-Type printheads are based on HP thermal inkjet technology TIJ 2.5

## HSAJET® and HP TIJ 2.5 technology

The HSAJET® printers use HP thermal inkjet technology TIJ 2.5, providing high-resolution printing up to 600 dpi for sharp text, crisp barcodes and intense spot colours.

Versatile and affordable, HP's advanced inkjet technology powers a wide range of industrial and commercial printing applications - from simple text documents to vivid, complex print jobs on many types and sizes of media.

## HSAJET® printheads

The HSAJET® printheads are available in three different versions: Top - Side - Side/low.

The physical dimensions of each version along with cable connector directions provide advantages to each printhead. This facilitates the installation.

The robust stainless steel design meets the demands for production environments.

## HSAJET® F-type printheads

Every stall in our F-type printheads has a switch. This has been added to avoid damage to the printhead if the ink cartridge is removed from the stall during print mode.

If a cartridge is removed, the power to the printhead is cut off.

See available controllers on the back page.



## HP key features

- Cost-effective: No warm-up cycle and no down time
- Easy to use: No special training required to operate and maintain thermal inkjet printers
- Fast: Hundreds of tiny nozzles firing at high frequency allow high-quality printing at high speeds
- Reliable: TIJ is less sensitive to air bubbles in the firing chamber than other printing technologies, avoiding print quality problems and delays caused by trapped air
- Flexible: Supports a wide variety of media
- High quality: TIJ places smaller drops more accurately, producing consistently superb image and text quality
- Environmentally safe: With thermal inkjet, there is no need for service technicians qualified to handle volatile solvents, and no noxious fumes
- Lower cost of ownership: A thermal inkjet printer can cost much less than other printing equipment, reducing the market entry cost



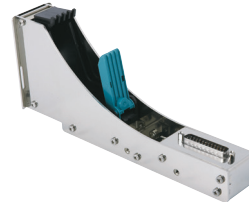
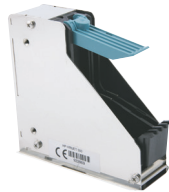
# Technical Details

F-TYPE PRINTHEADS CONFIGURATIONS

TOP/DOWN

SIDE/LOW

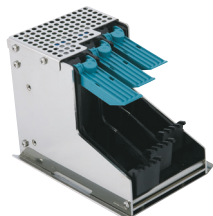
1-PEN



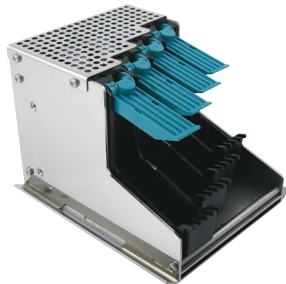
2-PEN



3-PEN

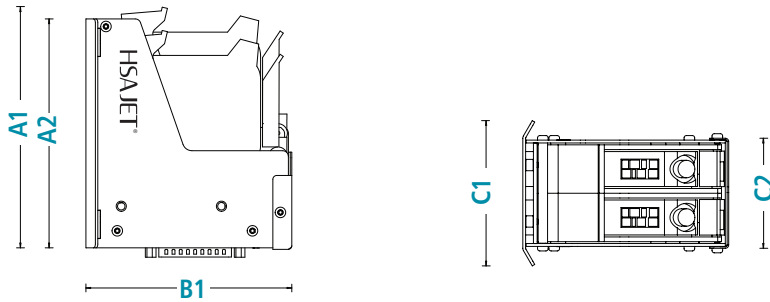


4-PEN



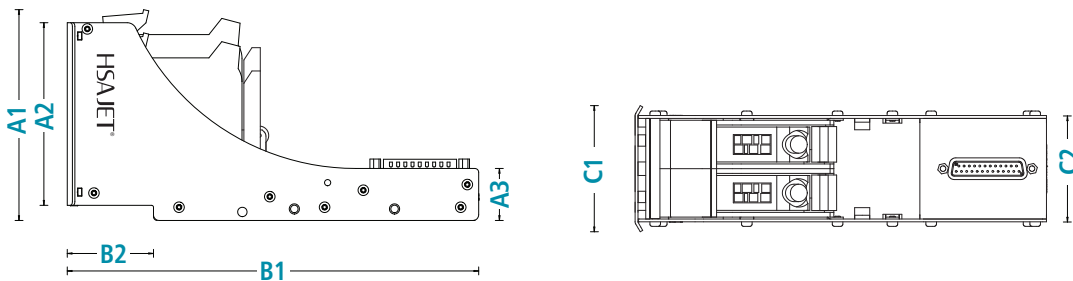
# Technical Details

## F-TYPE PRINTHEADS DIMENSIONS



### TOP/DOWN

Dimensions in mm (inches)	A1	A2	B1	C1	C2
1-PEN	115 (4.51)	108 (4.24)	106 (4.18)	43 (1.68)	32 (1.26)
2-PEN	128 (5.04)	121 (4.77)	109 (4.29)	77 (3.02)	58 (2.29)
3-PEN	140 (5.52)	133 (5.24)	109 (4.29)	102 (4.03)	84 (3.30)
4-PEN	152 (6.0)	146 (5.73)	109 (4.29)	128 (5.05)	109 (4.31)



### SIDE/LOW

Dimensions in mm (inches)	A1	A2	A3	B1	B2	C1	C2
1-PEN	99 (3.91)	84 (3.32)	28 (1.08)	218 (8.57)	46 (1.80)	45 (1.76)	32 (1.26)
2-PEN	112 (4.39)	97 (3.80)	28 (1.08)	218 (8.57)	46 (1.80)	67 (2.63)	56 (2.21)
3-PEN	124 (4.87)	109 (4.29)	28 (1.08)	218 (8.57)	46 (1.80)	94 (3.68)	82 (3.22)
4-PEN	136 (5.36)	122 (4.79)	28 (1.08)	218 (8.57)	46 (1.80)	119 (4.69)	107 (4.23)

# Technical Details

## F-TYPE PRINTHEADS

### Technology

HP TIJ 2.5

### Print height

12.7-50.8 mm / ½" - 2"  
1 to 4 pens

### Print distance

0.5-2.0 mm  
(nozzle to print surface)

### Interface

SUB D25

### Signals

Switch signal

### Complies to

CE directives

### Housing

Stainless steel

### Environmental conditions

Operating temperature: 10-40° C  
Humidity: 10-90%  
Non-condensing

### Cables

2.0 mtr. F-M 25-pin cable (included)  
5.0 mtr. F-M 25-pin cable (option)

### Weight

see details below

Vertical resolution (DPI)	Horizontal resolution 75-2400 DPI (variable)* speed examples (m/min)			
	75 DPI	300 DPI	600 DPI	2400 DPI
600 DPI	304	76	38	10
300 DPI high speed	608	152	76	19
300 DPI (row A)	304	76	38	10
300 DPI (row B)	304	76	38	10

\*) Dependent on controller and software

### Accessories

- Bridges in two standard lengths, special length available on request
- Printhead mounts (for bridge) for downprint mounting
- Foot plates/soles for left or right travel
- HSAJET® HP printheads with 1 to 4 pens can be combined and mounted on a common footplate. This enables printheads of 7, 8 or 9 pens
- TIJ 2.5 print cartridges (HP 45)

## WEIGHT

in kg / lbs	Top kg (lbs)	Side kg (lbs)	Side-Low kg (lbs)
1-pen (½")	0.37 (0.81)	0.36 (0.79)	0.48 (1.05)
2-pen (1")	0.62 (1.37)	0.60 (1.32)	0.73 (1.60)
3-pen (1½")	0.82 (1.81)	0.99 (2.02)	0.91 (2.19)
4-pen (2")	1.04 (2.30)	1.07 (2.35)	1.28 (2.83)

## CONTROLLERS



MTHP4  
MINITOUCH



TIPC15  
TOUCH CONTROLLER



CUF  
CONTROLLER  
UNIT



CBF/OPC/RPC/CB6E



TCUF+TCUF-int  
TINY CONTROLLER

CHECK OUR WEBSITE FOR LATEST REVISION OF THIS DATASHEET

DISTRIBUTOR:



HSA Systems (head offices)  
DENMARK | SKOVLENDE +45 4494 0222 | ODENSE +45 6610 3401

HSA Systems (subsidiary offices)  
FRANCE +33 1 4815 5050 | GERMANY +49 5257 938 6777

www.hsasystems.com | mail@hsasystems.com